

Why Women?

A Case for Targeted investment in the Women's Sector

By Siobhan Harper-Nunes



Who Am I?

- Degree in Comparative Social Policy (1985)
- Masters in Urban Regeneration (2005)
- Head of External Funding (2004)
- Founder Shakti Women (2006)
- Business Consultant 2006-present
- Vice Chair Birmingham Race Impact Group (2022)
- Candidate Green Party (2021 & 2024)
- Secretary Women's Consortium 142 Members
- Research Background
- Writer
- Ambitious
- Tenacious
- I believe in better!





My Journey

- As a young “princess” and later, woman of colour, I had many conscious and unconscious questions growing up?
- Why are there no black leaders?
- Where are the women?
- Why is no one who looks like me, in positions of power?
- Why do people feel uncomfortable when I ask WHY?

LAUNCH

BIG THANK YOU TO JESS PHILLIPS
FOR HER DEDICATION AND
HARDWORK IN COLLATING
PINK PAPER 2021

Why the Pink Paper?



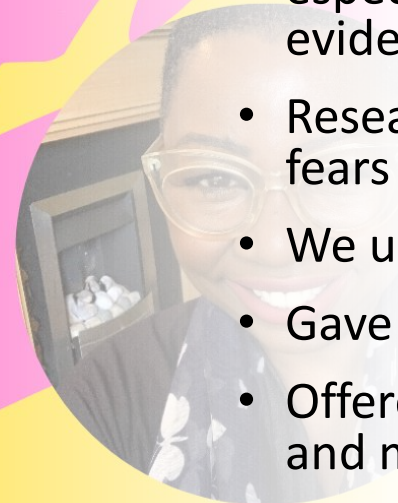
Jess Phillips
Speaker



Siobhan Harper-Nunes
Speaker



Danielle Parker
Writer & Lead Researcher
for Pink Paper 2021



Cheryl
Host

- Post Covid impact on women especially black women seemed evident
- Research supported our worsts fears
- We updated PP21
- Gave it to 100 women's groups
- Offered free bid writing training and marketing
- Created the Women's Consortium (currently 142 members).

Why Women?

- We earn 2/3rds as much as men for the same work
- 3:4 UK companies pay male staff more than female
- 9:10 women work for companies who pay men more
- **Tapping into female talent could lift the UK GDP by 10% by 2030**



Why Women?

- 1:3 of us will experience Domestic Abuse
- 52% of women experience sexual harassment in the workplace
- 1:4 of us will experience unwanted touching





Why Black Women?

- Black British women are **five** times more likely to die in pregnancy.
- 1: 5 Black women will experience rape

- **74% of black women feel neglected by the health service**

Why Black Women?

- 1:3 Black women will experience mental health issues
- Black people are 4 times as likely to be detained under the MHA

“Black women face significant disparities in mental health care”. Psychiatric Times21



Cost of Living Crisis!

- 50% of Bangladeshi households, 46% of Pakistani households and 40% of Black African/Caribbean households are living in poverty compared to 19% of White British households.
- The percentage of households with financial debts that exceed their financial assets was highest for the Black African and Other Asian groups (both 44%) compared with the White British group. (ONS, 2020)
- Women being in the lowliest most insecure jobs are worst affected by lay-offs and by debt
- **42.9% BAME women said** they believed they would be in more debt, compared to 37.1% of white women, and 34.2% of white men.

“Black women are the least likely to be among the UK’s top earners compared to any other racial or gender group” LSE 2021



Access to Green Spaces

Black, Asian and ethnic minorities (BAME) are some of the worst affected, with those communities more than twice as likely to struggle to find green space compared to their white counterparts according to (Friends of the Earth and Lottery Fund 2021)

This also has a negative impact on our mental health!

So What's the Answer? Q&A

- **Women Focused Funding & Capacity Building**
- **Women2Women Consortium more support**
- **Annual Update of Pink Paper – data is queen!**
- **Look at Best practice (e.g. see London Funders.org)**
- **Equity Partners**
- **Social Justice Funders (gender, race, poverty and climate injustice).**



A photograph of a coffee shop setting. In the foreground, a white cup of latte with a heart-shaped foam design sits on a white saucer. Behind it is a glass of water and a small potted plant with green leaves. The background is a wooden table. The image is partially cut off by a white, jagged-edged shape on the right side.

Fancy A Coffee?

Let's Talk...

Siobhan Harper-Nunes BSocSci, MSc

55 Newhall Street, Birmingham B3 3RB

Siobhan@shaktiwomen.com

O: 0121 233 1670

M: 07973 666 567